



澳門大學
UNIVERSIDADE DE MACAU
UNIVERSITY OF MACAU

Introduction of the Postgraduate House 研究生宿舍簡介

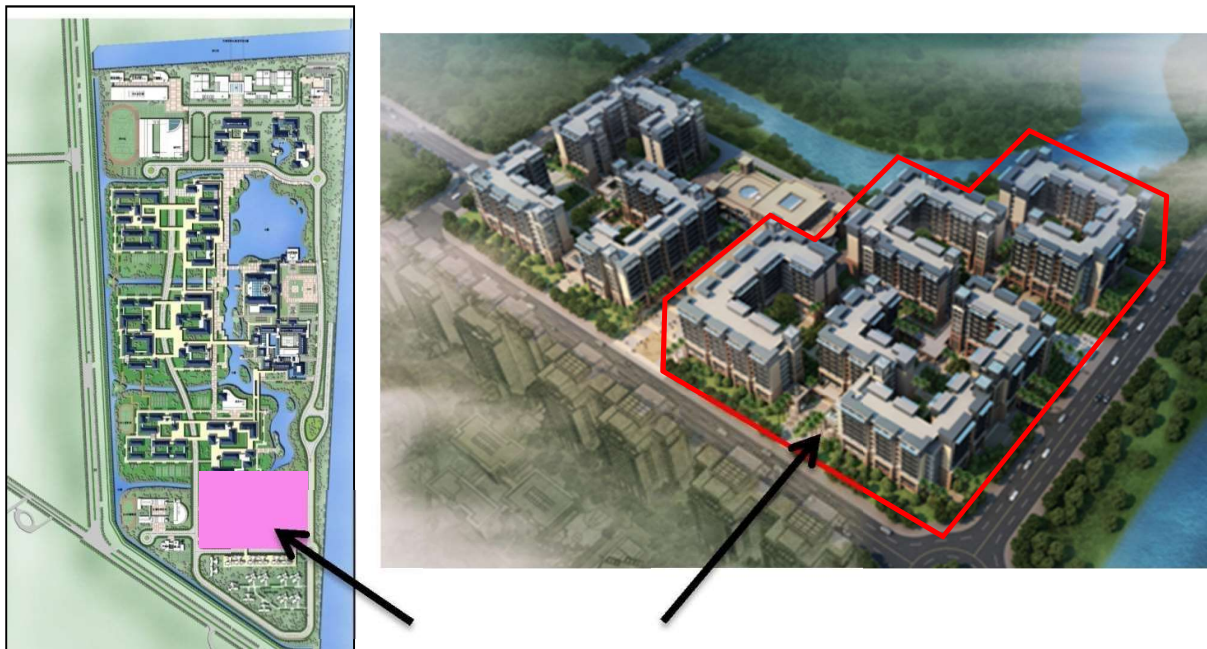
The Postgraduate House (hereafter referred to as “PGH”) consists of 5 buildings (S1, S2, S3, S4 and W32), offering more than 3,000 bed spaces and living services to UM postgraduates and designated research staff. All the rooms in the PGH are fully furnished, internet-connected, air-conditioned and with bathrooms.

The PGH aims to provide residents with a comfortable and harmonic living environment, also organize and provide various activities and services to foster their learning, research and employability.

研究生宿舍，由五座大樓組成(南一座、南二座、南三座、南四座以及西三十二座)，為澳大研究生及指定的研究人員提供超過3,000個宿位及生活服務。所有房間提供空調、寬頻上網及浴室等設備，配套完善。

在這裡，宿舍不但致力為住客提供一個舒適和諧的居住環境，並舉辦和提供多元化的活動和服務以提升他們的學術、研究和就業能力。

Location & Map / 地點及地圖



Postgraduate House
研究生宿舍



澳門大學

UNIVERSIDADE DE MACAU
UNIVERSITY OF MACAU

Type of accommodation / 房間種類

The PGH provides a total of 3,032 bed spaces (1,004 single rooms, 986 shared rooms and 48 suites) among the 5 buildings.

研究生宿舍共有五座大樓，提供 3,032 個宿位 (1,004 間單人房、986 間雙人房及 48 間套房)。

Rooms and Beds 房間及宿位	PGH 研究生宿舍					TOTAL 總數
	S1 南一座	S2 南二座	S3 南三座	S4 南四座	W32 西三十二座	
Room Type 房間類型						
Single Room 單人房 (Beds 宿位)	272 (272)	108 (108)	186 (186)	80 (80)	358 (358)	1,004 (1,004)
Double Room 雙人房 (Beds 宿位)	---	283 (566)	363 (726)	340 (680)	---	986 (1,972)
* Suite 套房 (Beds 宿位)	48 (48)	---	---	---	---	48 (48)
**Disabled Room 無障礙房 (Beds 宿位)	2 (2)	2 (2)	2 (2)	---	2 (2)	8 (8)
Total Room 房間總數 (Beds 宿位)	322 (322)	393 (676)	551 (914)	420 (760)	360 (360)	2,046 (3,032)

Remark 備註:

- * Suites are applicable to UM students who are married couples only. 套房只供澳門大學已婚夫婦之學生申請。
- **Disabled Rooms are applicable to students with physical disability. 無障礙房只適用肢體障礙同學申請。
- Bed and Mattress Dimensions 床及床褥的尺寸:

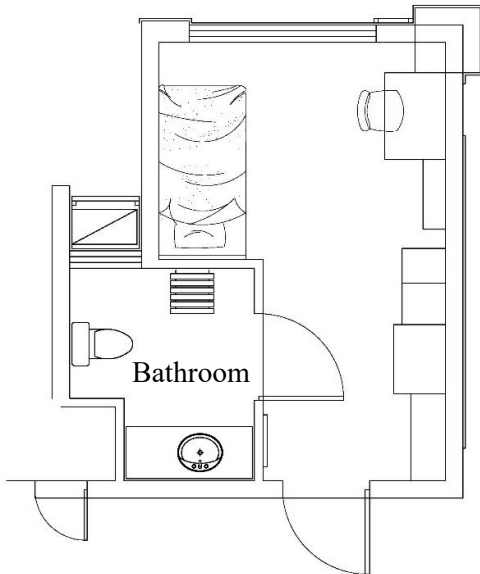
Room Type 房間類型	Mattress Type 床褥類型	Bed Dimension 床的尺寸 W 闊(cm) x L 長(cm) x H 高(cm)	Mattress Dimension 床褥的尺寸 W 闊(cm) x L 長(cm) x H 高(cm)
Single Room in S1 to S4 單人房 (位於南一座至南四座)	Bed with mattress (Single) 床連床褥 (單人)	100 x 200 x 55	100 x 200 x 15
Single Room in W32 單人房 (西三十二座)	Bed with mattress (Single) 床連床褥 (單人)	106 x 207 x 50	100 x 200 x 10
Double Room 雙人房	Bed with mattress (Single) 床連床褥 (單人)	100 x 200 x 55	100 x 200 x 15
Suite 套房	Bed with mattress (Double) 床連床褥 (雙人)	150 x 200 x 55	150 x 200 x 20
Disabled Room 無障礙房	Bed with mattress (Single) 床連床褥 (單人)	100 x 200 x 42	100 x 200 x 15



澳門大學
UNIVERSIDADE DE MACAU
UNIVERSITY OF MACAU

Single Room in S1-S4

位於南一座至南四座單人房

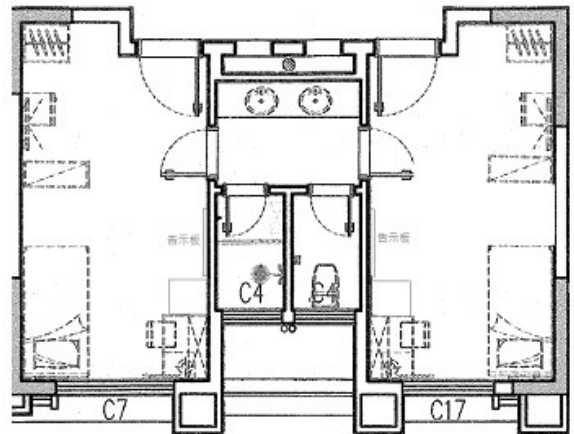


(Size 面積: 17.35m² 平方米)

Single Room in W32

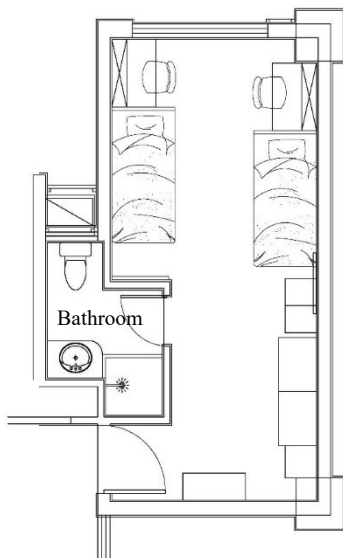
(2 residents will share one bathroom)

位於西三十二單人房(兩名宿生共用一衛浴)



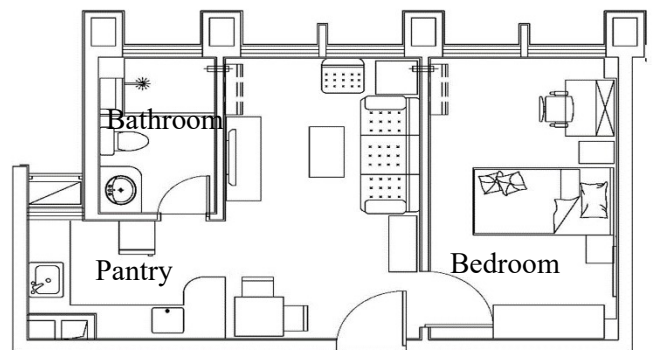
(Size 面積: 15.66m² 平方米)

Double Room 雙人房



(Size 面積: 24.14m² 平方米)

Suite 套房



(Size 面積: 38.5m² 平方米)



澳門大學

UNIVERSIDADE DE MACAU
UNIVERSITY OF MACAU

Residence Period 住宿期

- 1st semester: Early Aug – Late Dec# / 第一學期:8月上旬–12月下旬#
- 2nd semester: Early Jan – Late May# / 第二學期:1月上旬–5月下旬#
- Summer stay: Early Jun – Late Jul# / 暑假住宿:6月上旬–7月下旬#

The specific move-in date and move-out date will be subject to the announcement in due course. 具體入宿日及退宿日期將以實際公佈為準。

Room facilities / services included /房間設施及服務包括:

1. Bed with mattress / 床與床墊
2. Desk with bookshelf / 書桌與書架
3. Chair / 椅子
4. Wardrobe with mirror / 衣櫃連鏡子
5. Mobile pedestal / 流動矮櫃
6. Shoes cabinet / 鞋櫃
7. Split type air-conditioner / 分體式空調
8. Mini-fridge / 迷你雪櫃
9. Curtain / 窗簾
10. Internet / 上網服務
11. *General maintenance / *一般維修
12. MOP50 monthly water quota / 每月澳門幣50元用水配額
13. MOP100 monthly electricity quota / 每月澳門幣100元的電費配額

Remark 備註:

- a. *Residents shall make restitution to UM for any damage or lose of facilities/equipment, damage to the appearance (exterior or interior), integrity or alteration of functions of the rooms during their stay. The amount of restitution is to be defined by UM in accordance with the actual situation.

*住宿生必須向澳門大學對在住宿期間所引致的任何宿舍設施/設備的損壞或遺失；或破壞房間的外觀、內觀或完整性；或更改其用途而引致的損失作出賠償。賠償金額由大學根據實際情況訂定。

- b. Students are required to prepare their own daily necessities and beddings (e.g. pillows, pillowcases, blankets, bed sheet and coverlets).

學生須自行準備個人衛生用品及床上用品(如：枕頭、枕頭套、棉被、被單、床單等)。



澳門大學

UNIVERSIDADE DE MACAU
UNIVERSITY OF MACAU

Inside the Residence / 宿舍區內

1. Communal space / 公共空間
2. Pantry / 茶水間
3. Washer and Dryer / 洗衣機及乾衣機
4. Computer room / 電腦
5. Study room / 溫習室
6. Multi-functional activity rooms / 多功能活動室

Contact Us / 聯絡我們

Postgraduate House – Student Housing Office

Address: Postgraduate House S3, Room G002, G/F

Tel: (853) 8822 2660

Fax: (853) 8822 2371

Email: sao.pgh@um.edu.mo

Office Hours

Monday to Thursday: 9:00am - 1:00p.m.; 2:00p.m. - 5:45p.m.

Friday: 9:00am - 1:00p.m.; 2:00p.m. - 5:30p.m.

.....

研究生宿舍 – 學生住宿辦公室

地址：研究生宿舍 S3 地下 G002 室

電話：(853) 8822 2660

傳真：(853) 8822 2371

電郵：sao.pgh@um.edu.mo

辦公時間

星期一至星期四：上午九時至下午一時；下午二時至五時四十五分

星期五：上午九時至下午一時；下午二時至五時三十分