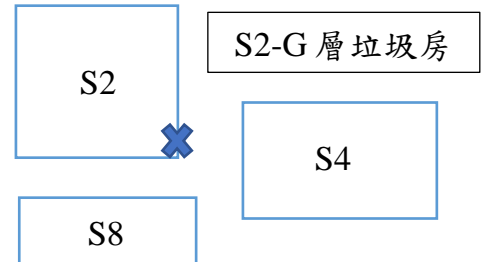


為維護宿舍環境整潔，請各位住宿人士配合以下規定：

1. **用途限制：**茶水間垃圾桶及樓層垃圾房僅供妥善處理垃圾使用，請勿用於其他用途。
2. **保持整潔：**請住宿人士保持茶水間垃圾桶及樓層垃圾房整潔有序，避免溢出或散落垃圾。
3. **愛護公物：**請愛護公物，切勿移動、損壞或塗鴉任何設備。
4. **垃圾投放指引：**
  - **小型垃圾（如紙屑、果皮、廚餘等）：**請投放至各樓層的茶水間垃圾桶。
  - **一般生活垃圾及中型垃圾（如快遞箱、塑膠盒等）：**請妥善包好投放至各樓層的垃圾房。
  - **大型垃圾及有強烈異味垃圾（如大型快遞箱、廚具、傢具等）：**請投放至 S2-G 層垃圾房。
  - **易碎品、尖銳物品及易腐敗物品（如玻璃、廚餘等）：**務必包好，以免刺穿垃圾袋造成安全隱患或產生難聞氣味及液體滲漏。
5. **可回收物處理：**可回收物品請投放至同學所屬樓棟地下大堂之回收箱。
6. **禁止丟棄：**易燃、易爆、劇毒等危險物品，嚴禁丟棄於垃圾桶或垃圾房內。
7. **禁止堆放：**請勿佔用垃圾房通道或周邊空間堆放私人物品。如發現有私人物品擺放於此，管理公司將逕行移除。
8. **警告及處理：**如有違規行為，本處將依規定發出警告信予違規者。
9. **問題反饋：**若垃圾桶、垃圾房或公共區域有任何問題（如垃圾溢出、設備損壞等），請及時與管理公司聯繫（電話：8822-2518）。



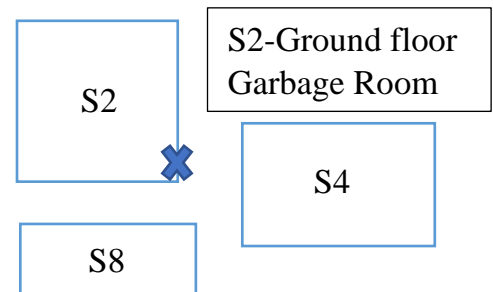
希望每位住宿人士都能遵守規定，共同營造一個乾淨、整齊的居住環境。

## Notes for PGH Public Area Waste Disposal

PGH-293/N/SRS

To maintain the cleanliness and order of PGH environment, please cooperate with the following stipulations:

1. **Usage Restrictions:** The garbage bins in the pantries and garbage rooms on each floor are only for proper waste disposal. Please do not use them for any other purposes.
2. **Maintain Cleanliness:** Please keep the pantry garbage bins and garbage rooms on each floor clean and orderly, avoiding overflowing or scattered waste.
3. **Protect Public Property:** Please take care of public property and do not move, damage, or deface any equipment.
4. **Waste Disposal Guidelines:**
  - **Small Waste (such as paper scraps, fruit peels, food waste, etc.):** Please dispose of them in the garbage bins located in the pantries on each floor.
  - **General Household Waste and Medium-Sized Waste (such as courier boxes, plastic containers, etc.):** Please securely bag them and dispose of them in the garbage rooms on each floor.
  - **Large Waste and Waste with Strongly Odors (such as large courier boxes, kitchenware, furniture, etc.):** Please dispose of them in the garbage room on the S2-Ground floor.
  - **Fragile Items, Sharp Objects and Perishable Items (such as glass, food waste, etc.):** Please securely bag them to prevent punctures, safety hazards, unpleasant odors and liquid leaks.
5. **Recyclable Waste Disposal:** Please dispose of recyclable items in the recycling bins located in the lobby of your building.
6. **Prohibited Disposal:** Flammable, explosive and highly toxic hazardous materials are strictly prohibited from being disposed of in garbage bins or garbage rooms.
7. **Prohibited Storage:** Please do not occupy the pathways or surrounding areas of garbage rooms with personal belongings. The management company will remove any personal items found there without prior notice.
8. **Warnings and Handling:** Any violations of these stipulations will result in a warning letter being issued to the violator.
9. **Feedback:** If you encounter any problems with the garbage bins, garbage rooms, or public areas (such as overflowing trash, damaged equipment, etc.), please contact the management company immediately at 8822-2518.



We hope that all residents will abide by this Notes and work together to create a clean and tidy living environment.

